



drake & co
ESTATE AGENTS



2 HAMILTON ROAD MANCHESTER

£118 Per Week

Student Accommodation Available 1st July 2026 £118pppw

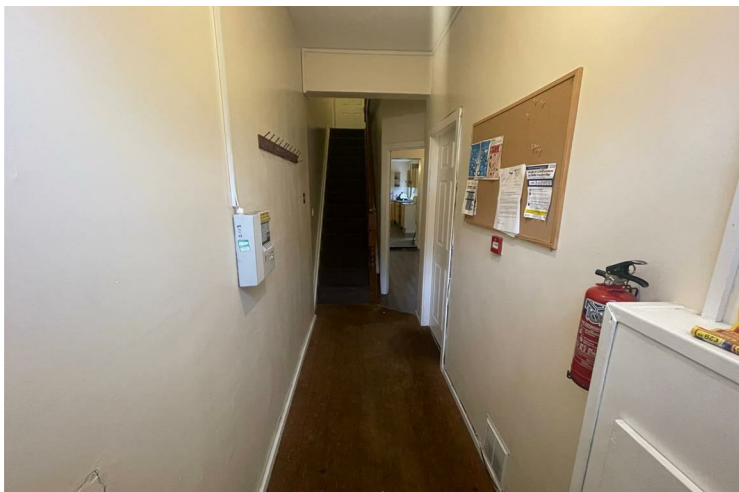
Don't miss the chance to view this impressive and spacious seven bedroom end-terraced house! Spread over three floors, this property offers seven large double bedrooms, including one with a private ensuite shower room. There's also a generous kitchen, a separate dining room, and a comfortable lounge area, along with two shared shower rooms for convenience. Located just off Dickenson Road, tenants will enjoy easy access to the famous Curry Mile, as well as major bus routes into Manchester City Centre and the universities.

Property Reference: P1637

- 12 month tenancy
- Deposit equivalent to 5x weekly rent
- Holding deposit equivalent to 1x weeks rent due to secure the property, this goes towards the total deposit due
- Rent calculated per calendar month (not four weeks basis)

Don't miss out, contact the office and quote the property reference above to book your viewing today!

Disclaimer: These particulars are believed to be accurate but they are not guaranteed and do not form a contract. Any images, videos and/or floorplans on this brochure are for guidance purposes only and are not necessarily to scale.




- 7 Bedrooms • House • Longsight • Fully furnished • 3 Bathrooms/shower rooms • Bills not included • Dining kitchen • Washer/dryer







Energy Efficiency Rating		
	Current	Potential
<i>Very energy efficient - lower running costs</i>		
(92 plus) A		
(81-91) B		
(69-80) C		73
(55-68) D		
(39-54) E	41	
(21-38) F		
(1-20) G		
<i>Not energy efficient - higher running costs</i>		
England & Wales		EU Directive 2002/91/EC 

EPC Rating: E Council Tax Band: B

Agents Note: Whilst every care has been taken to prepare these particulars, they are for guidance purposes only. All measurements are approximate and are for general guidance purposes only and whilst every care has been taken to ensure their accuracy, they should not be relied upon and potential buyers/tenants are advised to recheck the measurements

Drake & Co
 Anson Parade
 161a Dickenson Road
 Rusholme
 Manchester
 M14 5HZ

0161 224 2134
 info@drakes.co.uk
<https://www.drakes.co.uk/>

